

## 8 SPARE PARTS

1	Handle - cold	B960698A
1a	Handle - hot	B960697AA
2	Screw M4	A961780NU
3	Handle carrier dekora	A961659NU
4	¼ SE cartridge cold	A961087NU
4a	¼ SE cartridge hot	B960470NU
5	Indicator ring blue	B960700NU
5a	Indicator ring red	B960699NU
6	Body bath/shower filler	-
7	Diverter knob	B960514AA
8	Flow straightener M28x1	A960460AA
8a	Aerator	A960309AA
9	O-Ring 31.47x1.778	-
10	Nipple M36x1/M34x1.5	-
11	Diverter set	B960495AA
12	Elbow set B960496AA	B960496AA
13	Non return valve	A962594NU
14	Connecting set	B960471NU
15	Flexible shower hose	A963173NU
16	Fibre ring 16x13x1.5	-
17	Shower restraining bracket	EEM134901AA
18	Shower wall bracket	S960164AA
19	Shower handspray	B950297AA11

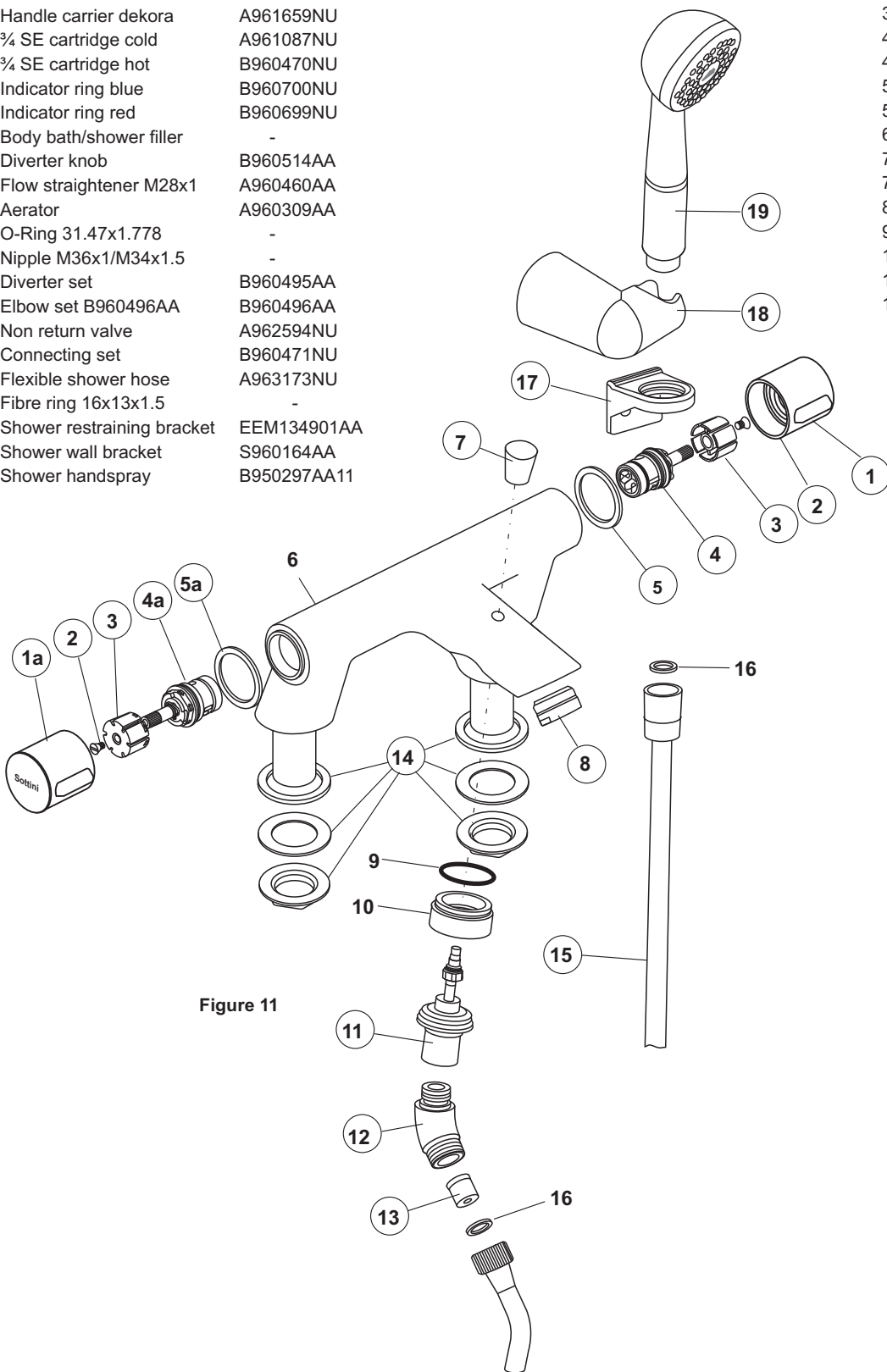


Figure 11

1	Handle - cold	B960698AA
1a	Handle - hot	B960697AA
2	Screw M4	A961780NU
3	Handle carrier - decora	A961659NU
4	¼ SE cartridge cold	A963004NU
4a	¼ SE cartridge hot	A963003NU
5	Indicator ring - blue	B960700NU
5a	Indicator ring - red	B960699NU
6	Body washbasin	-
7	Aerator M24x1-5l/m	B960754AA
7a	Flow straightener insert	A962713NU
8	Top fixing kit	B960703NU
9	Pop-up drain assembly	B960853AA
10	Flexible hose L300 M12/29mm	-
11	Pull-up rod complete	B964883AA
12	Pop up waste shackle	A963404NU

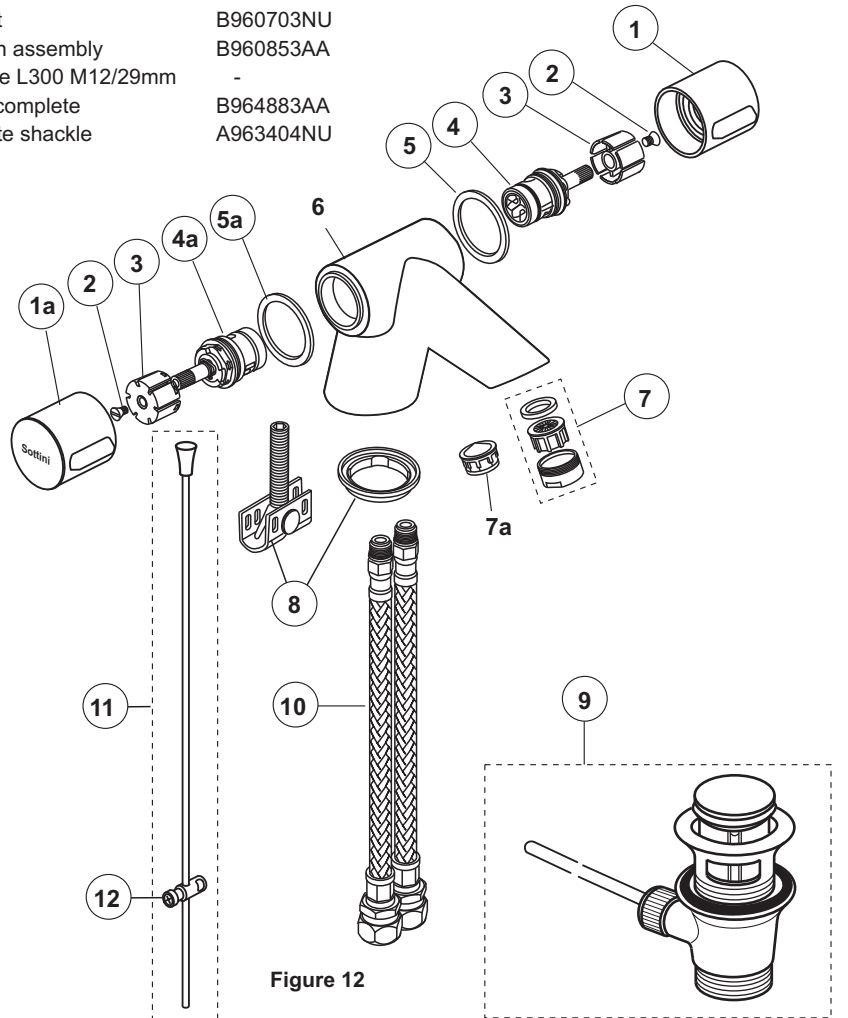
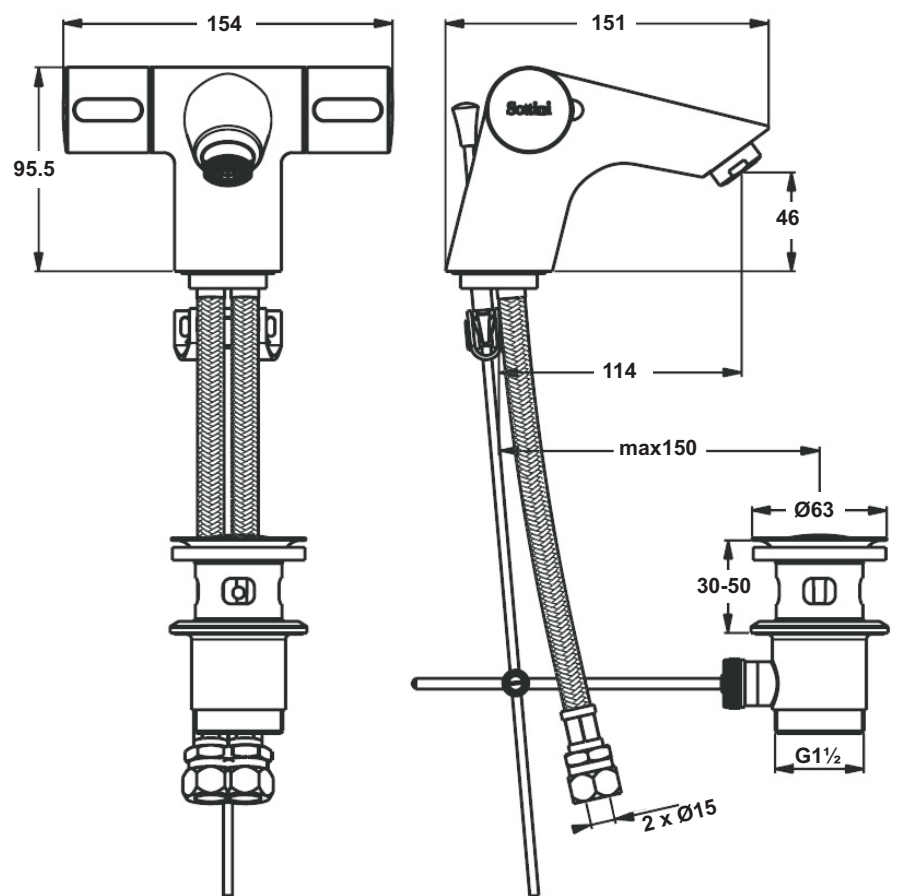


Figure 12

### Installation Instructions

## ROSITA DUAL CONTROL

Ceramic Disc Dual Control Bathroom Fittings



B8421AA Basin Mixer 1-hole with pop-up waste

B8428AA Bath Shower Mixer 2-hole with shower kit

# Sottini

**INSTALLER:** After installation please pass this instruction booklet to user

CUSTOMER CARE HELPLINE

**0870 129 6085**

CUSTOMER CARE FAX

**01482 499611**

E-MAIL

**UKcustcare@IdealStandard.com**

Sottini pursues a policy of continuing improvement in design and performance of its products. The right is therefore reserved to vary specification without notice.

Sottini is a division of Ideal Standard (UK) Ltd

Sottini  
The Bathroom Works, National Avenue  
Kingston-upon-Hull, HU5 4HS England

4764 07/10

B865373

## 2 RANGE, SUPPLY CONDITIONS & OPERATION

**The fittings covered by this installation and maintenance instruction should be installed in accordance with the water regulations published in 1999\*, therefore, Sottini would strongly recommend that these fittings are installed by a professional installer**

\*A guide to the Water Supply (Water Fittings) Regulations 1999 and the Water Byelaws 2000, Scotland, is published by WRAS (Water Regulations Advisory Scheme) Fern Close, Pen-y-Fan Industrial Estate, Oakdale, Newport, NP11 3EH. ISBN 0-9539708-0-9

### WATER SUPPLIES

Rosita dual control fittings are designed for use on systems where the water pressure is a minimum of 0.1 bar (0.2 bar for bidet) and they are suitable for use up to a pressure of 5.0 bar.

It is recommended that the hot and cold supply pressures are reasonably balanced and from a common source.

With the exception of the basin mixer B8421AA, Rosita dual control fittings are supplied with a flow straightener in the spout. When fitting on pressures in excess of 1.0 bar it is recommended that an aerator (not supplied) should be substituted.

The Rosita basin mixer, A8421AA comes fitted with a 5 litre/min regulated aerator (B960754AA). A flow straightener insert (A962713NU), which may be preferable where pressures are lower than 1.0 bar, is supplied separately.

### CODE FOR SUSTAINABLE HOMES

The Basin Mixer is supplied with a normal flow straightener fitted and with a regulated aerator loose in the box. This regulated aerator, which has a flow rate value of 5 litres/minute, should be fitted where an installation is seeking an optimum rating under the Code for Sustainable Homes.

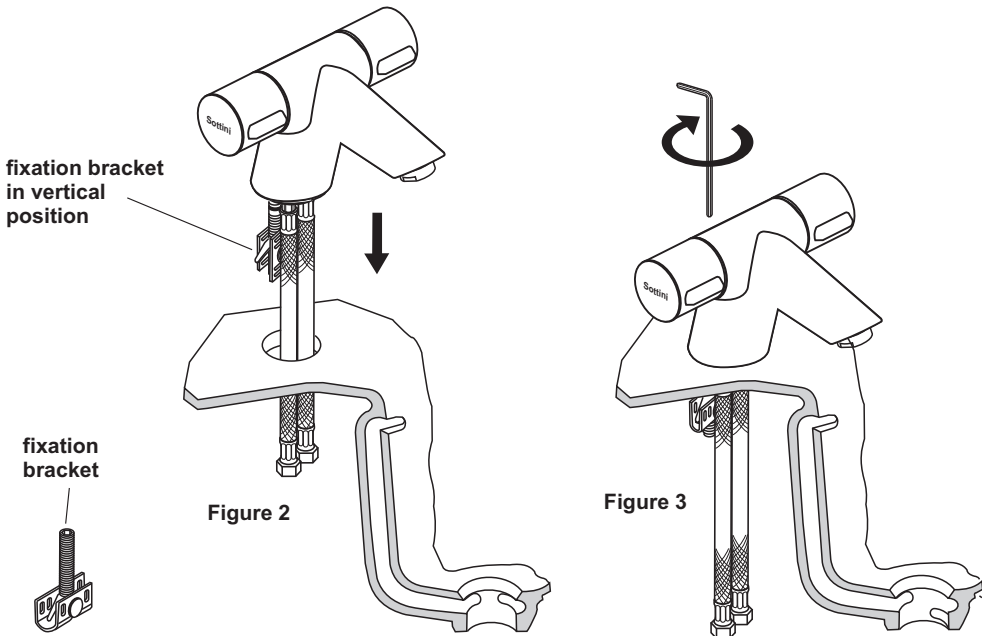
### CONNECTIONS

It may be necessary to insert the flexible inlet tails of the basin fittings through the tap hole from below before screwing them into the fitting body as the inlet end connectors may not pass through the tap hole when fitted. Ensure they are tightened before securing the fitting to the tap deck.

Bath Mixers, 2-hole	- G $\frac{3}{4}$
Basin monoblock	- Flexible inlet tails with 15mm compression connectors

## 3 LOCATION & FIXING

### ONE HOLE BASIN MIXER A8421AA



### Basin Monoblock Mixer

Connect fixation bracket to the underside of the mixer body by 2 - 3 threads only  
THIS IS A LEFT HAND THREAD.

- Ensure fixation bracket is also only engaged by 2 - 3 threads.
- Hold the fixation bracket in the vertical position and place through the tap hole ensuring that the sealing washer remains above the platform as this acts as a watertight seal between the two surfaces, (Fig 7).
- When positioned correctly, tighten the fitting using the Allen key provided. (Pass the Allen key to the user for future use). (Fig 8)
- Once tightened, position the vertical pop-up rod (13) through the same vertical hole and connect this to the horizontal rod using the connector provided.

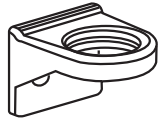
## 4 BACK SYPHONAGE PROTECTION

### INSTALLERS' DUTY

The water regulations place a duty on installers to ensure that flexible shower hoses cannot create a backflow risk. This risk exists when it is possible for a flexible shower outlet to enter any sanitary vessel.

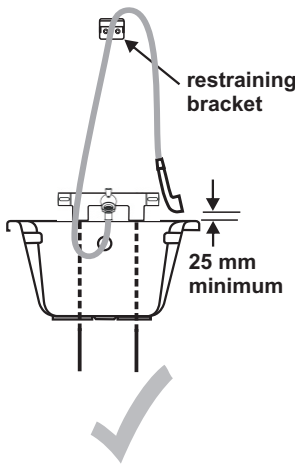
The details of these risks are outlined in a separate leaflet (E965049), however, to enable installers easily to comply with the regulations, all Ideal Standard bath shower mixers are supplied with a screw-to-wall restraining bracket.

This restraining bracket should be sited such that when the flexible shower hose is passed through it, the spray head cannot enter any adjacent sanitary appliance. The three sketches below summarise its correct use.

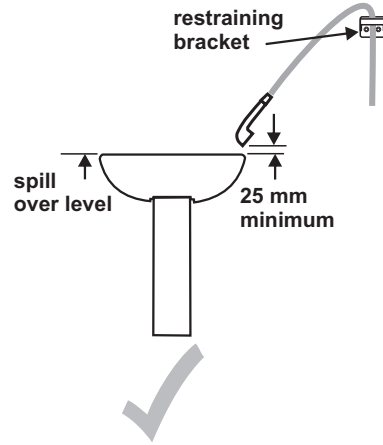


**Figure 4**  
**shower hose restraining bracket.**  
Screw to the wall in a suitable position as shown below

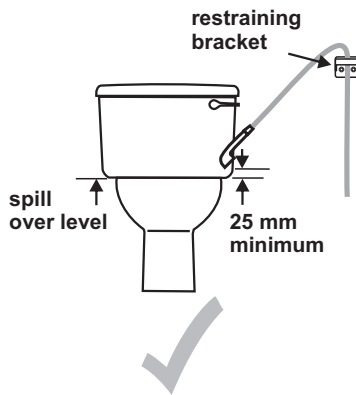
The three applications shown below are permissible in any application, either domestic or health-care establishments, as long as the supplies are at reasonably balanced pressures and from a common source. i.e. both from storage or both from the same mains fed system such as a Modulating Combination Boiler or Unvented Hot Water Supply System (UHWSS).



**Fig 5 Bath or shower tray**



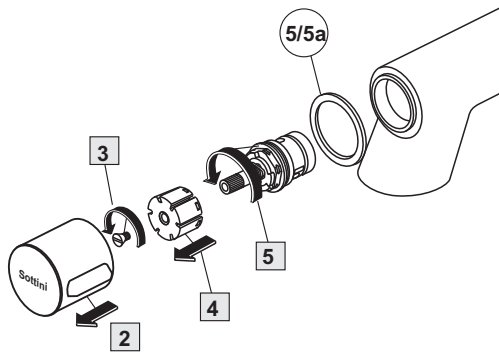
**Fig 6 Washbasin**



**Fig 7 WC or bidet**

## 5 CARTRIDGE REPLACEMENT

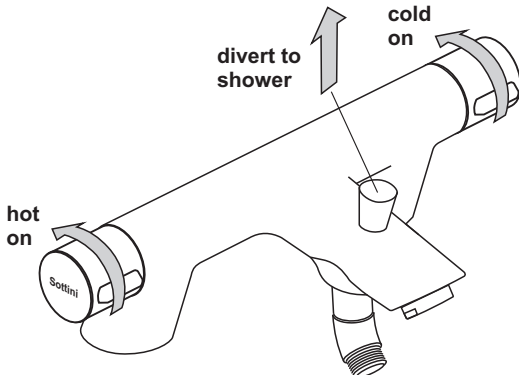
1. Turn off both hot and cold water supplies
2. Pull off the handle/s
3. Undo screw/s
4. Pull off the handle carriers
5. Unscrew the  $\frac{1}{4}$  turn SE cartridge and replace with the new one
6. Reverse the procedure for assembly ensuring the red/blue index ring (part 5/5a) is correctly positioned



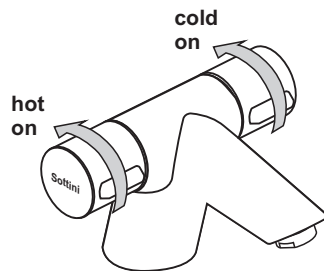
**Figure 8**

## 6 OPERATION

These fittings operate using quarter turn SE cartridges, G1/2 for the Basin and G3/4 for the bath/shower mixer. The illustration shows the movement to turn the fittings on. The operation of the bath/shower mixer diverter is illustrated in Figure 9



**Figure 9**



**Figure 10**

## 7 CLEANING

When cleaning the fittings always use soap based cleaners. Never use abrasive or scouring powders and never use cleaners containing alcohol, ammonia, nitric acid, phosphoric acid or disinfectants.